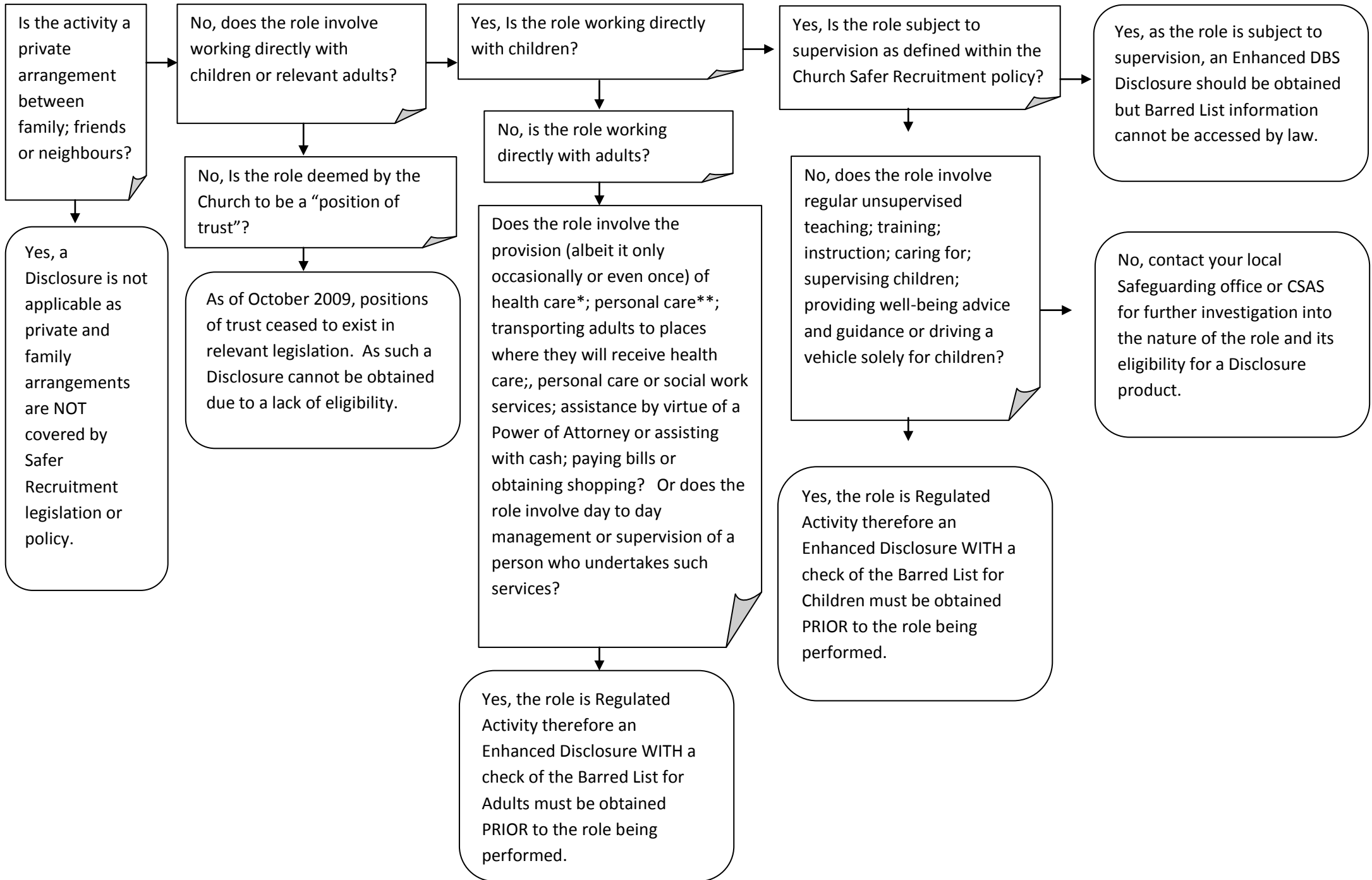


### Regulated Activity Decision Making Flowchart



## Regulated Activity Decision Making Flowchart

### Definitions:

\*Health Care: is defined as health care provided by a health care professional (meaning a person regulated by bodies like General Medical Council; Nursing & Midwifery council for example). Health care means all forms of health care provided for adults for physical or mental health needs and includes palliative care. Psychotherapy and counselling are included when provided by a health care professional. Services not provided by a health care professional are not covered by Regulated Activity i.e. life coaching; pastoral counselling etc. First Aid is only included when the First Aider works specifically for an organisation that offers those services i.e. St John Ambulance and therefore a volunteer who is a designated First Aider is not within Regulated Activity. Peer support groups i.e. Alcoholics Anonymous are not covered by Regulated Activity.

\*\*Personal Care: is defined as those who provide an adult with physical assistance with eating; drinking; toileting; washing or bathing; dressing; oral care or care of skin, hair or nails due to the adult's age, illness or disability. Additionally those who prompts and supervises an adult who, due to age, illness or disability, cannot make the decision to eat; drink; go to the toilet; wash; dress or care for their mouth, skin, hair or nails without prompting and supervision are deemed to be in Regulated Activity. Those who trains, instructs or provides advice relating to eating, drinking, toileting, washing, dressing, oral care etc due to age, illness or disability is in Regulated Activity. In circumstances where a hairdresser or a person cuts the hair of an adult are excluded from Regulated Activity.

### Scenarios of Roles and their eligibility basis:

Administrative roles i.e. Parish Secretary are NOT eligible for a Disclosure as they do not work directly with vulnerable groups. Additionally Disclosures cannot be accessed for those who handle sensitive or confidential information.

A Care Assistant in a Care Home who cuts and files a resident's nails because for example the resident is sufficiently visually impaired that they cannot do this for themselves, is engaging in Regulated Activity.

A volunteer who prepares and serves a meal to an adult in their own home (but does not physically aid the person to eat) is NOT in Regulated Activity.

A Care Home Worker who prompts a resident with dementia to eat their meal and ensures that they do so is engaging in Regulated Activity.

An SVP member who regularly visits housebound and infirm people within the Parish and on occasions is asked by the homeowner to do some shopping or pay a bill on their behalf is engaging in Regulated Activity.

A Parish Volunteer who is part of a group of volunteers that drive congregation members to their GP surgery or hospital appointments is working in Regulated Activity.

The volunteers who are part of the Parish rota to bring Congregation members who would otherwise be unable to attend Mass, are NOT engaging in Regulated Activity as Church services are not covered by the Protection of Freedoms Act.

The volunteers are who part of the Parish rota to transport children to Parish Football matches or organised Parish events are engaging in Regulated Activity.